



85 V AC 300 V AC Telecom Power System Network Power Stability

Our Product Introduction

for more products please visit us on batteriesback-up.com

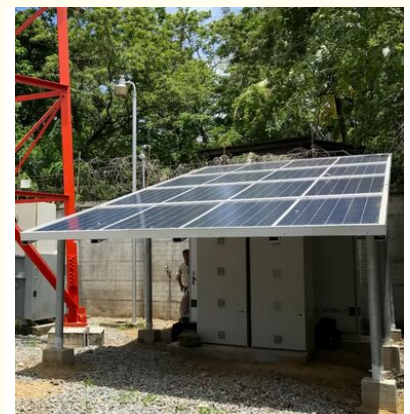
Basic Information

- Place of Origin: China
- Brand Name: QY
- Certification: UN38.3, IEC, MSDS
- Model Number: GES10-48
- Minimum Order Quantity: 1
- Packaging Details: wooden box
- Delivery Time: 1-2 months
- Payment Terms: T/T, L/C
- Supply Ability: 2000-5000 per month



Product Specification

- Productname: Telecom Power System
- Industrial Ac Input: Single Phase For Each Rectifiers
- Color: RAL7035 Grey
- Batterybackuptime: 4-8 Hours
- Cable Inlets: From Cabinet Bottom
- Battery Layer No: One
- Protection Level: IP55
- Product Name: Indoor Rectifier Scable Cabinet
- Highlight: **85V AC telecom power system,
300V AC network power stability,
telecom power system with warranty**



More Images



Product Description

85 V AC 300 V AC Telecom Power System Network Power Stability

Product Overview

The Telecom Power System is a highly reliable and efficient solution designed to meet the demanding requirements of modern telecommunication infrastructure. As a critical component in ensuring uninterrupted power supply for telecom networks, this system integrates advanced features and robust construction to deliver superior performance and long-term operational stability.

Engineered to provide consistent and stable power, the system plays a vital role in maintaining the integrity of telecommunication services, making it an indispensable part of any Telecommunication Power Supply System.

Key Features

- Product Name: Telecom Power System
- High System Efficiency of **96.5%**
- IP55-rated enclosure ensuring dust and water protection
- Industrial AC Input: Single Phase for Each Rectifier
- Indoor Rectifier Scalable Cabinet design for optimized space utilization
- Integrated Telecom Power Management Unit for efficient power control
- Supports Wireless Communication Power Distribution
- Reliable Network Power Backup Solution to ensure uninterrupted service

Technical Specifications

Parameter	Specification
Product Name	Telecom Power System
Battery Layer No	One
Input Voltage	85 V AC - 300 V AC
Color	RAL7035 Grey
Industrial AC Input	Single Phase For Each Rectifier
Battery Test Readings	50
Protection Level	IP55
System Efficiency	96.5%
Battery Backup Time	4-8 Hours
Rectifier	FlatpackS 24/1800HE

Applications

The QY Telecom Power System, model GES10-48, is a highly reliable and efficient solution designed to meet the demanding needs of modern telecommunication infrastructures. This robust system is specifically engineered to provide uninterrupted power supply in critical communication environments.

- Satellite communication facilities requiring stable and continuous power
- Telecommunication base stations and network infrastructure
- Remote telecommunication sites with unstable electrical supply
- Emergency communication centers requiring reliable backup power
- Communication hubs where uninterrupted connectivity is critical

The system's wide input voltage range of 85 V AC to 300 V AC ensures reliability even in regions with unstable electrical supply, while the 4-8 hour battery backup time provides ample power during outages or emergency situations.



Ningbo Qiyuan New Energy Co., Ltd



18858073356



tony@qygen.com



batteriesback-up.com

60 Pingan Road, Dafu, Guanlan Community, Longhua District, Shenzhen, China