



20a Lifepo4 UPS Battery 51.2v 100ah Portable Lithium Ion Battery Pack Energy Storage

Our Product Introduction

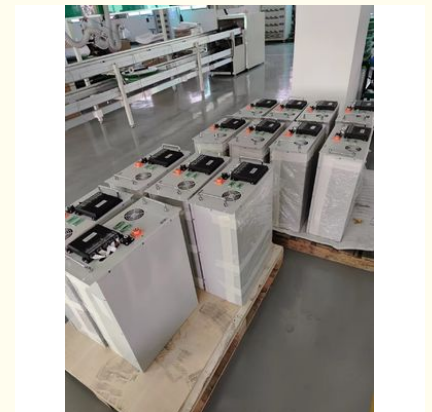
Basic Information

- Place of Origin: China
- Brand Name: Qiyuan
- Certification: CE, IEC, MSDS, UN38.3
- Model Number: QYU48-50T
- Minimum Order Quantity: 10
- Price: USD/CNY, Unit
- Packaging Details: wooden case
- Delivery Time: 1-2 months
- Payment Terms: L/C, T/T
- Supply Ability: 500 set per month



Product Specification

- Battery Type: LFP Battery
- Rated Voltage: 51.2V
- Life Cycle: 3000 Times
- Installation: Rack/tower
- Application: UPS System, Back Up Power
- OEM/customization: Acceptable
- Highlight: **20a Lifepo4 UPS Battery, 51.2v portable lithium ion battery, 100ah portable lithium ion battery**



for more products please visit us on batteriesback-up.com

Product Description

Features:

High ratio lithium iron phosphate batteries, high safety performance;
 Lithium iron phosphate battery has UL, CE certification;
 Modular design, lightweight, optimized footprint;
 Lithium battery system with voltage, current, temperature monitoring functions;
 Supports high current charge;
 Screen display, can acquire the battery information in real time;
 Can be directly connected to the ring and CAN communication;
 With automatic fire extinguishing equipment;
 Blind charge and discharge, blind self-protection function;
 City grid automatic start function;
 Supports neutral line connection and conventional installation;
 Supports customized for parallel use with lead acid batteries;

Rated Capacity	100Ah	25°C±3°C, 0.2C constant current discharging.
Rated Voltage	48V	
Standard Charge Current	20A(0.2C)	0.2C CC(Constant current)charge to 54.0V, then CV(constant voltage)charge, cut off when charging current≤0.05C.
Max Continuous Charge Current	50A(0.5C)	Do not exceed 0.5C
Max Charge Current	100A(1C)	Requirement: 1 cycle/day
Charge Cut Off Voltage	54.0V	Equalized Charge Voltage:53.5V Floating Charge Voltage:51.0V
Standard Discharge Current	20A(0.2C)	0.2C CC(Constant Current)discharge, cut off @40.5V.
Max Continuous Discharge Current	50A(0.5C)	Continuous 50A discharge
Max Discharge Current	100A(1C)	Requirement: 1 cycle/day
Discharge Cut Off Voltage	40.5V	2.7V/Cell, 40.5V / Pack.
Max Pulse Discharge Current	130A	25°C±3°C, ≤1s
Working Temperature (charge)	0°C~55°C	0°C-10°C:continuous 20A(max)charge 10°C-45°C: continuous 50A(max)charge 45°C-55°C:continuous 20A(max)charge
Working Temperature (discharge)	-20°C~55°C	Battery can work at specified temperature range with capacity loss in tolerance.
Storage temperature	-20°C~ 45°C	(short term) Within 1 month
Storage temperature	0°C~35°C	(long term) Within 1 year
Battery Weight	About 45Kg	
Battery Impedence	≤30mΩ	DC Internal Resistance
Charge/Discharge Efficiency	≥95%	Charge/discharge efficiency in Wh (round trip efficiency) at 0.2C charge and discharge current, 25°C.



Ningbo Qiyuan New Energy Co., Ltd



18858073356



tony@qygen.com



batteriesback-up.com